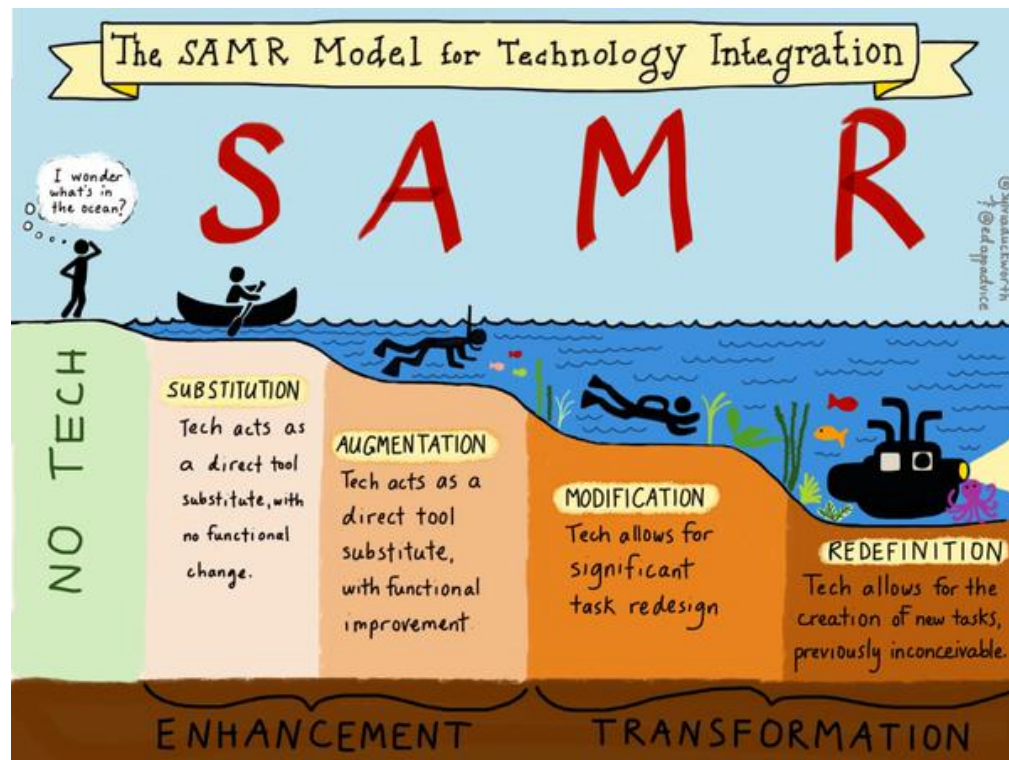


The SAMR Model

One of the most useful models for introducing technology in schools we have come across is the SAMR model.

Substitution - Augmentation - Modification - Redefinition



Listen to the developer of this model at the link below:

Ruben Puentedura on Applying the SAMR Model

<https://www.commonsemmedia.org/videos/ruben-puentedura-on-applying-the-samr-model>

Riaan van der Bergh
Education Technology Manager
tech@fedsas.org.za

#FEDSASTech is brought to you in association with:

Principal Software
<http://www.principalsoftware.co.za>

Vastratech
<http://www.vastratech.com>